



# SonicWALL Content Security Manager Series

WEB SECURITY

The Comprehensive Security, Compliance and Productivity Solution

- **Comprehensive content filtering**
- **Real-time gateway anti-virus, anti-spyware and intrusion prevention**
- **Instant messaging (IM), peer-to-peer (P2P) and multimedia controls**
- **Granular policy control via single sign-on**
- **Automated anti-virus and anti-spyware client enforcement**
- **Powerful Web-based reporting**
- **High availability**
- **Seamless integration behind virtually any firewall**

In today's business environment, organizations rely on the Internet for access to information and resources. While instant access to information over the Internet is critical, it introduces incredible risk to networks and data. Every day, new external threats such as viruses, worms, Trojans, phishing attacks and spyware programs cause serious financial damage to companies through compromised computing systems, lost productivity and the theft of passwords and other confidential information. Internal threats arise through employee use of Web sites that contain objectionable or even illegal content can leave organizations vulnerable to legal liabilities and unwanted security risks. Additionally, the use of instant messaging (IM) and peer-to-peer (P2P) applications compete for employees' time and can result in tremendous losses in productivity.

The SonicWALL® Content Security Manager (CSM) Series is an appliance-based gateway security and content filtering solution that integrates real-time gateway anti-virus, anti-spyware, intrusion prevention and content filtering services to deliver maximum network protection from external and internal Internet threats. The CSM 2200 is perfect for smaller organizations with up to 250 nodes and the CSM 3200 is perfect for mid-sized organization with up to 1,000 nodes. Combining dynamic threat management capabilities with precise control over Internet usage in an affordable, appliance-based solution, the CSM Series boosts network security and employee productivity, optimizes network utilization and mitigates legal liabilities. This unique solution integrates seamlessly behind virtually any networking firewall, enabling organizations of all sizes to upgrade their security without necessarily upgrading their existing firewall.

## Features and Benefits

**Comprehensive content filtering** provides granular, policy-based controls to manage internal access to inappropriate, unproductive and potentially illegal Web content.

**Real-time gateway anti-virus, anti-spyware and intrusion prevention** that scans over a multitude of widely-used protocols and ports and delivers complete protection by eliminating viruses, worms, Trojans, spyware and other external Internet threats at the gateway before they can infect the network.

**Instant messaging (IM), peer-to-peer (P2P) and multimedia controls** improve network performance, block security threats and protect against legal liabilities.

**Granular policy control via single sign-on** streamlines user authentication and the management of access to network resources and online content.

**Automated anti-virus and anti-spyware client enforcement** verifies that every computer accessing the network has the most recent version of anti-virus and anti-spyware software installed and active, eliminating the costs commonly associated with desktop anti-virus and anti-spyware policy management.\*

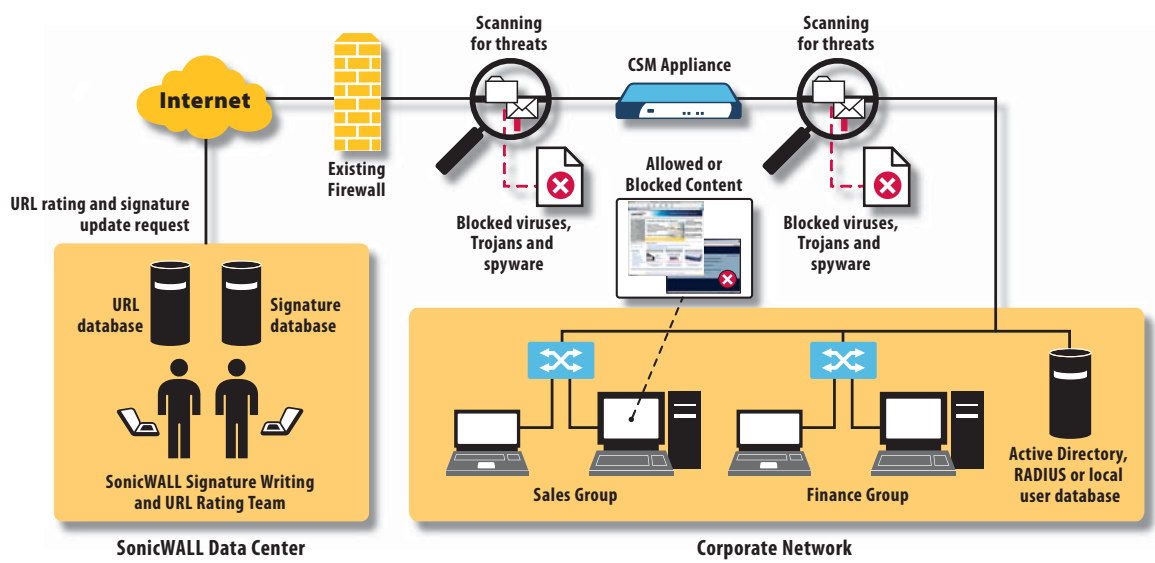
**Powerful Web-based reporting** provides greater insight into network usage through custom reports that can be viewed in multiple formats.

**High availability** ensures the network is always protected and productivity remains uninterrupted by automatically failing over to a secondary backup unit should the primary unit fail.

**Seamless integration behind virtually any firewall** enables organizations to leverage the existing network infrastructure without the need to purchase additional hardware.



## Deployment Scenario



**SonicWALL CSM**

**Series delivers**

**maximum**

**network**

**protection from**

**external and**

**internal Internet**

**threats.**

### Feature List

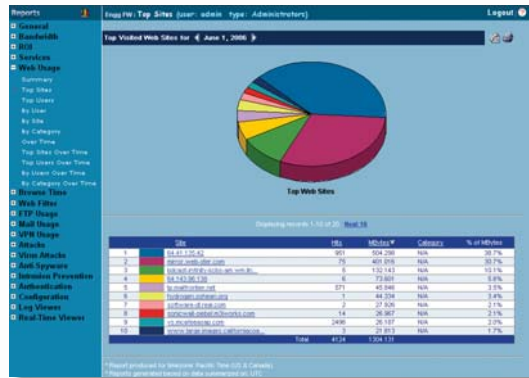
<b>Advanced Content Filtering</b>	<ul style="list-style-type: none"> <li>■ Safe Search Enforcement enforces client usage of Google and Yahoo search engine filtering features</li> <li>■ Smart URL Parsing intelligently filters cached content by analyzing the whole URL and not just the domain and path portions of the URL</li> <li>■ Dynamic Rating Engine allows an unrated URL to be dynamically rated in real time</li> </ul>
<b>URL Database</b>	<ul style="list-style-type: none"> <li>■ Comprehensive, continuously updated ratings database featuring millions of Web sites and domains</li> </ul>
<b>Threat Protection</b>	<ul style="list-style-type: none"> <li>■ Protection against viruses, worms, Trojans, software vulnerabilities such as buffer overflows, as well as peer-to-peer and instant messenger applications, backdoor exploits and other malicious code</li> </ul>
<b>Virus Scanning Capabilities</b>	<ul style="list-style-type: none"> <li>■ SMTP, POP3, IMAP, HTTP, FTP, NetBIOS</li> <li>■ Instant messaging and peer-to-peer file transfers; multimedia applications</li> <li>■ Dozens of stream-based protocols</li> </ul>
<b>Signature Database</b>	<ul style="list-style-type: none"> <li>■ Dynamically-updated database containing thousands of attack, vulnerability and high threat virus signatures</li> </ul>
<b>Scalability</b>	<ul style="list-style-type: none"> <li>■ Able to scan thousands of concurrent downloads of any file size</li> </ul>
<b>Supported Compression Formats</b>	<ul style="list-style-type: none"> <li>■ ZIP, Deflate and GZIP</li> </ul>
<b>Logging and Reporting</b>	<ul style="list-style-type: none"> <li>■ Real-time logging and alerting</li> <li>■ Granular reports through SonicWALL ViewPoint™ and Global Management System</li> </ul>

## Advanced Reporting and Analysis

The Content Security Manager Series includes advanced reporting and analysis tools that provides greater insight into network usage through custom Web-based graphical reports.

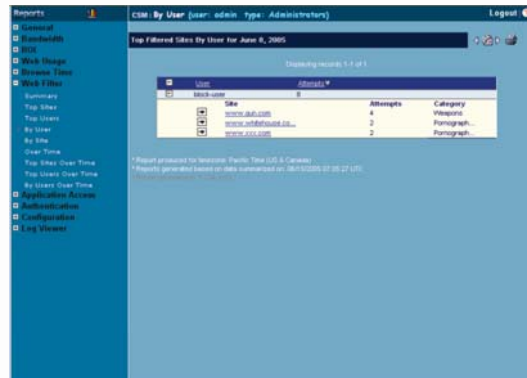
Create real-time and historical reports based on:

- Category
- Users (Sites accessed by user, blocked sites by user)
- Destination
- Return on Investment (ROI)
- Productivity
- Spyware blocked
- Viruses blocked



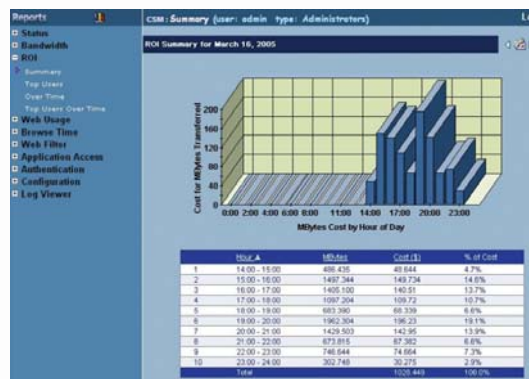
### Top Web Sites Visited

See summary analysis on the top sites visited by your workforce



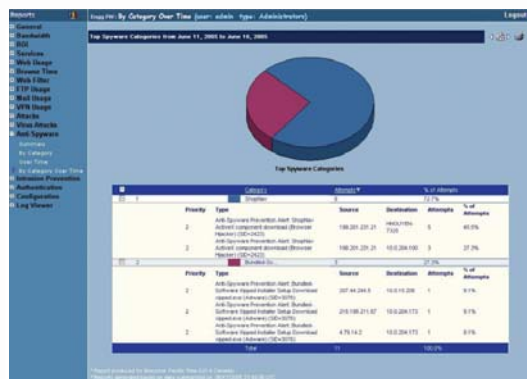
### Blocked Sites By User

Drill down into the detailed Web browsing behavior of individual users



### Return on Investment

Understand your costs and plan for your future needs



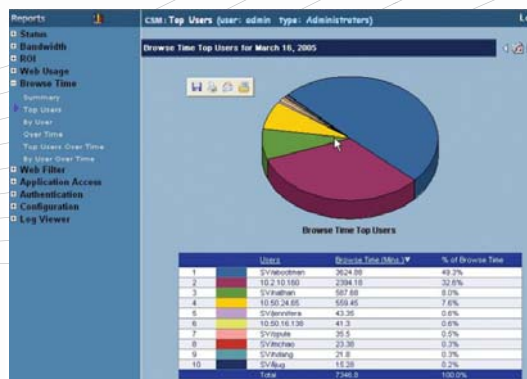
### Blocked Spyware Programs

Gain insight into blocked spyware programs and how to further protect against them



### Blocked Viruses

Gain insight into blocked viruses and to further protect against them



### E-mail Reports

Create and send reports via e-mail

# Specifications

## SonicWALL Content Security Manager Series

Content Security Manager Appliances	CSM 2200	CSM 3200
<b>Organization Size</b>	Small	Mid-Size
<b>Nodes Supported</b>	Up to 250 nodes	Up to 1000 nodes
<b>System</b>	<b>CSM 2200</b>	<b>CSM 3200</b>
<b>Management and Monitoring</b>	Web GUI (HTTP, HTTPS), Global Management System with SonicWALL GMS	Web GUI (HTTP, HTTPS), Global Management System with SonicWALL GMS
<b>Logging and Reporting</b>	ViewPoint®, Local Log, Syslog	ViewPoint®, Local Log, Syslog
<b>Hardware</b>	<b>CSM 2200</b>	<b>CSM 3200</b>
<b>Interfaces</b>	(4) 10/100 Ports Console: (1) Serial Port	(6) 10/100 Ports Console: (1) Serial Port
<b>Processor</b>	800 MHz x86 cryptographic accelerator	2 GHz Intel with dedicated cryptographic accelerator
<b>Memory (RAM)</b>	256 MB	256 MB
<b>Flash Memory</b>	64 MB	64 MB
<b>Power Input</b>	100 to 240 VAC, 60-50 Hz, 4 A	100-240 VAC, 60-50 Hz, 1.5 A
<b>Max Power Consumption</b>	65 W	143 W
<b>Total Heat Dissipation</b>	241 BTU	530 BTU
<b>Environment</b>	40-105° F, 5-40° C Humidity 10-90% non-condensing	Temperatures 40-105° F, 5-40° C Humidity 10-90% non-condensing
<b>MTBF</b>	11.2 years	9.2 years
<b>Dimensions</b>	1U rack-mountable 17.00 x 10.00 x 1.75 in 43.18 x 25.40 x 4.45 cm	1U rack-mountable 17.00 x 13.00 x 1.75 in 43.18 x 33.02 x 4.45 cm
<b>Weight</b>	8.50 lbs 3.86 kg	13.00 lbs 5.90 kg
<b>WEEE Weight</b>	8.8 lbs 4.0 kg	13.00 lbs 5.90 kg
<b>Features</b>	<b>CSM 2200</b>	<b>CSM 3200</b>
Comprehensive content filtering, including Smart URL parsing and dynamic rating engine	Yes	Yes
Integrated gateway anti-virus and anti-spyware	Yes	Yes
Scanning and cleaning of network traffic over a multitude of widely-used ports and protocols	Yes	Yes
Deep packet inspection architecture	Yes	Yes
Instant messaging (IM), peer-to-peer (P2P) and multimedia controls	Yes	Yes
Integrated web-based reporting and analysis	Yes	Yes
Integrated intrusion prevention scanning	Yes	Yes
Safe search enforcement	Yes	Yes
Client anti-virus enforcement*	Yes	Yes

\*Additional subscription required

For more information on the SonicWALL Content Security Manager Series, please visit our Web site at <http://www.sonicwall.com/products/csm/index.html>.



### SonicWALL Content Security Manager Series

#### Appliances

Content Security Manager 2200  
(Includes 1YR of 25-user Update Service)  
US/Canada  
01-SSC-6026

Content Security Manager 2200  
(Includes 1YR of 25-user Update Service)  
International  
01-SSC-6027

Content Security Manager 3200  
(Includes 1YR of 50-user Update Service)  
US/Canada  
01-SSC 6030

Content Security Manager 3200  
(Includes 1YR of 50-user Update Service)  
International  
01-SSC 6031

#### Update Services

CSM Update Service (25 Users)  
01-SSC-6006

CSM Update Service (50 Users)  
01-SSC-6007

CSM Update Service (100 Users)  
01-SSC-6008

CSM Update Service (250 Users)  
01-SSC- 6009

CSM Update Service (500 Users)  
01-SSC- 6010

CSM Update Service (1,000 Users)  
01-SSC- 6011

### SonicWALL, Inc.

1143 Borregas Avenue  
Sunnyvale CA 94089-1306

T +1 408.745.9600  
F +1 408.745.9300

[www.sonicwall.com](http://www.sonicwall.com)

